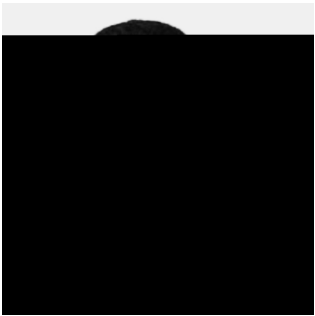


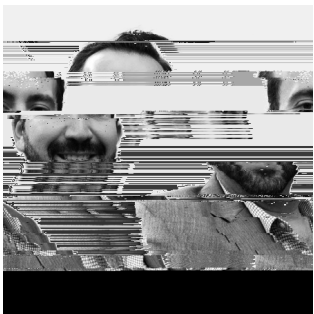


# BLOCK 1





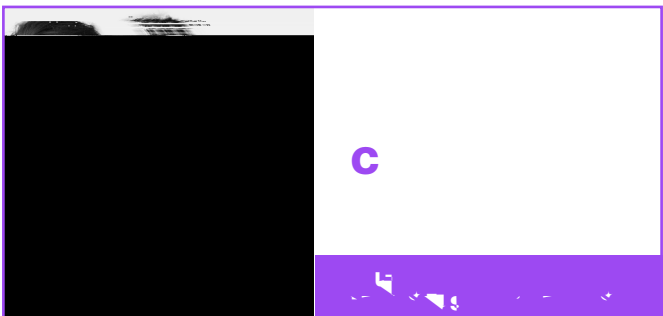
|



Professor of finance at EGADE Business School. He has experience in sustainable finance, renewable energy, development economics and real estate finance. He holds a PhD in Finance by the University of Zurich (2019). He has taught at Harvard Business School since

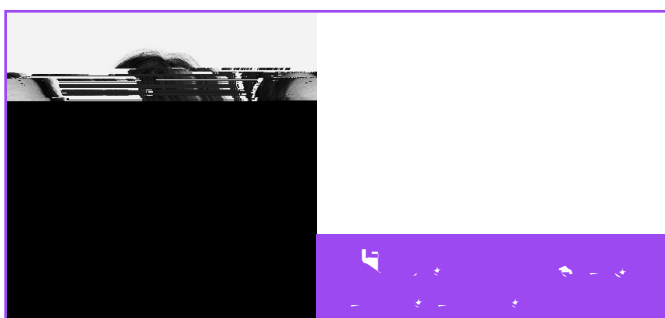
UNIANTES IMPACT  
ENTREPRENEURSHIP  
**BOOT  
CAMP**

# QUESTION ANSWERS



**Monday-Friday** (6:30 am – 9:30 am)

**Saturday** (9:00 am – 12:00 m)



Christina Lubinski holds a Ph.D. in History from the University of Goettingen (2009). She is Associate Professor at Copenhagen Business School and currently a visiting professor at USC's Lloyd Greif Center for Entrepreneurial Studies where she leads its entrepreneurship and humanities initiative. Prior to joining CBS, she was a Newcomen fellow at Harvard Business School and a visiting fellow at Universitat de Barcelona. Christina studies entrepreneurial imagination and action over time and has published in leading journals in both management and business (e.g., *Administrative Science Quarterly*, *Journal of Business Ethics*, *Journal of Business Venturing*, *Journal of Business Ethics*).

**Monday-Friday** (6:00 pm – 9:00 pm)

**Saturday** (9:00 am – 12:00 m)





## BLOCK 3

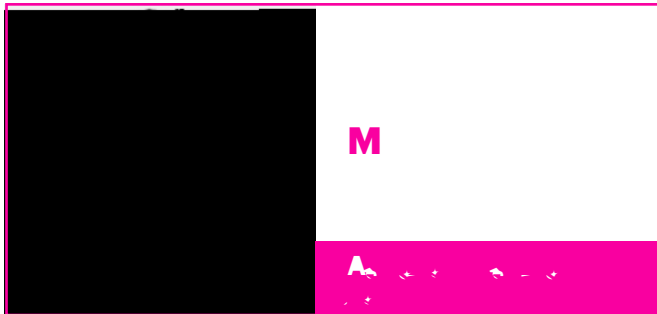
July 4 - July 14



**Monday-Friday** (6:00 pm – 9:00 pm)

**Saturday** (9:00 am – 12:00 m)

ON CAMPUS



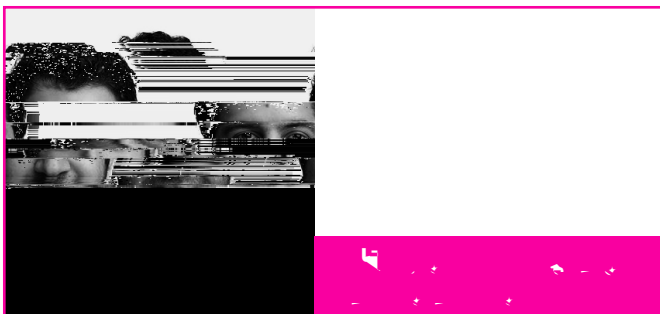
Assistant professor at Audencia Business School, and management consultant with Big 4 consulting firms preceded by leadership positions with multinationals like Ericsson, Siemens AG, and Nokia in addition to PPPs, and NGO's. Throughout his career, Mark has primarily served public and private sector clients on digital economic development, competitive and functional strategies, organizational transformations and development, human capital capacity building, competence framework development, and learning, practicing as a corporate director and adjunct professor in organizational behavior. Mark's experience was geographically earned in Europe, Middle East, and Africa, while he later focused on the Gulf region, and primarily on Saudi Arabia.



**Monday-Friday** (6:30 am – 9:30 am)

**Saturday** (9:00 am – 12:00 m)

ONLINE AM

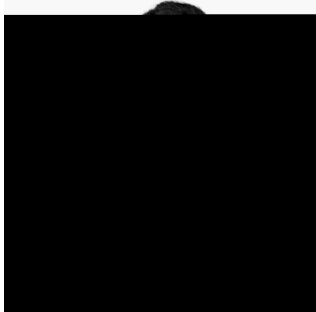


Utku Serhatli is an Assistant Professor at NOVA School of Business and Economics. He is primarily interested in sustainable operations with a focus on the operational and social impacts of economic and environmental issues. His research utilizes data analysis and mathematical modeling such as optimization, dynamic programming, stochastic processes, and game theory.

His teaching experience includes the core course of Operations Management at INSEAD, Operations Management, Operations Strategy, and Sustainable Operations at NOVA SBE.

He obtained a Doctor of Philosophy from INSEAD, prior to joining NOVA SBE. He also holds a Master of Science from INSEAD and a Bachelor of Science from Bilkent University. He previously worked as a financial consultant at TATA Consultancy Group.





Assistant professor at the Department of Business Administration, Jönköping International Business School, Jönköping University, Sweden. In December 2019, he received his Ph.D. degree with a dissertation titled "Sustainable supplier selection in the logistics

[Empty rectangular box with a yellow border]

## Contact at UASM



D

. **15@** . . .

. @ . .

<https://administracion.uniandes.edu.co>

Universidad de los Andes | Vigilada Mineducación.